



McGill

School of
Continuing Studies

Fostering lifelong learning

Make *your* mark

Our society and
workplaces are being
*fundamentally
transformed before
our eyes.*

Rapid changes in
technology, the
sustainability transition
and geoeconomic trends
pose risks to existing
jobs and livelihoods.

Advancing
reconciliation between
Indigenous and
non-Indigenous
communities is essential
for peaceful co-existence
and progress.

An aging population
worldwide calls for
creative solutions for
aging with purpose. As
we live longer, we must
learn longer.

In the face of persistent
societal inequities,
we need to rethink not
just what we are
teaching, but who is
involved and how.

How will we address these challenges?

By enabling flexible, lifelong learning and upskilling, expanding equitable access to top-quality, inclusive education, fostering innovation in the workforce, and promoting individual well-being.



The School of Continuing Studies
aims to create an adaptable and resilient
workforce, equipped to contribute to a
democratic and inclusive society.

Our mission and vision

The School of Continuing Studies extends McGill University's mission by providing lifelong learners access to a world-class university education and a professional community of practice dedicated to individual and social transformation.

We strive to be a local, national and global partner of choice based on our reputation for excellence in professional education and training.





To advance this mission and vision, we commit to:

- **Expanding access** to a world-class university education and professional training for diverse learners and communities
- **Delivering excellence** in teaching, learning and student services
- **Fostering innovation** through signature academic programming, experiential learning and applied research
- **Promoting well-being** in the workplace, classroom and the communities we serve

Make *your* mark
Fostering lifelong learning

Opportunities for philanthropic support

- 1 Expanding access to McGill for diverse communities
 - 2 Delivering excellence in teaching, learning and student services
 - 3 Fostering innovation
 - 4 Promoting well-being
-
- 5 Giving strategically: The Continuing Studies Opportunities Fund



Expanding access to McGill for diverse communities

Help us provide comprehensive student support

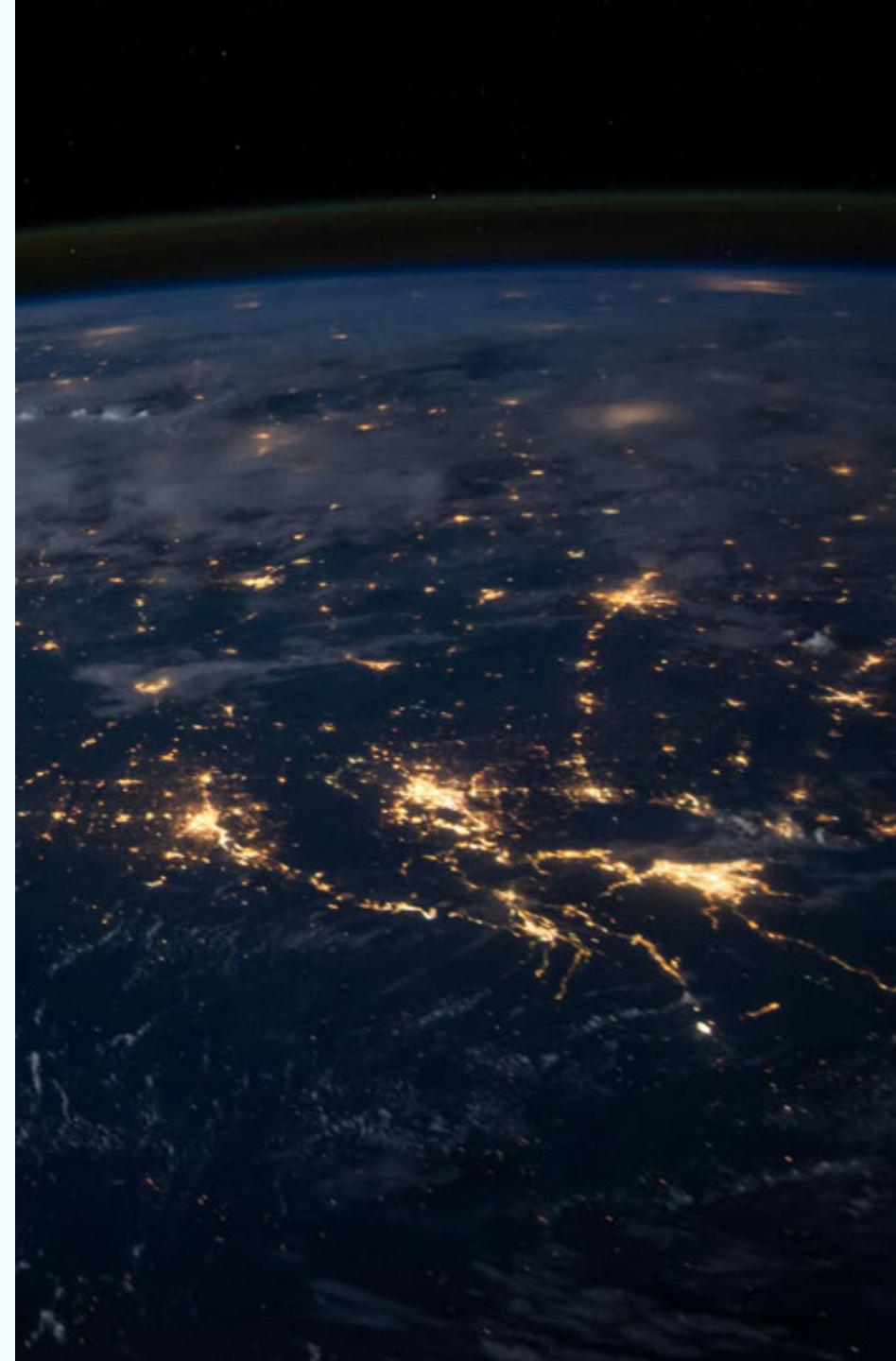
The groundwork

The School of Continuing Studies serves as a networking hub for employers and our diverse communities, from downtown Montreal to the Arctic Circle and around the globe.

Serving francophones, anglophones and many other linguistic communities, the School contributes to building a diverse and globally connected workforce for and beyond Quebec.

Your impact

Your support will allow the School to broaden its reach and capacity to serve small and medium-sized enterprises, as well as diverse communities – especially those who are underserved and underrepresented in today's workforce. These include Indigenous peoples, racialized groups, women returning to work, newcomers, people with disabilities and more.





Impact opportunities

- **Networked access:** Help us build a flagship Welcome Centre that will serve as a hub for learning, and for community and employer engagement in the heart of Montreal. The proposed Centre will be a space where learners can access support, and community partners and employers can network. It will also meet the latest sustainability standards and address calls to action from Canada's Truth and Reconciliation Commission.
- With your support, we can extend McGill's presence to locations in Greater Montreal and beyond, leveraging AI and technology to facilitate mobile learning.



Impact opportunities

- **The SCS Experiential Empowerment and Development (SEED) Initiative:** By supporting the [SEED initiative](#), you can provide entry into the Canadian workforce and financial stability for newcomers and underrepresented populations.
- **Indigenous Relations Initiative (IRI):** Gifts to the [Indigenous Relations Initiative](#) will help connect McGill resources with First Nations, Inuit and Métis communities' workforce development and student support.
- **Language Acquisition for Refugees and Forcibly Displaced Persons Initiative:** Your contributions will support language instruction in English and French, which is critical for a successful new start in Canada.





2

Delivering excellence in teaching, learning and student services

Give learners the skills to lead in the economy of the future

The groundwork

The School of Continuing Studies offers educational programming and professional development tailored to the needs of busy professionals and lifelong learners, informed by industry and societal realities.

Your impact

Your support ensures that SCS learners have access to the latest industry and community-based expertise and data, best practices in adult education (andragogy), and an opportunity to gain invaluable workplace experience regardless of origin or socio-economic background.





Impact opportunities

- **Work-Integrated Learning and Experiential Learning Fund:** Your support will allow newcomers and other socio-economically disadvantaged individuals, as well as small and medium-sized enterprises, to participate in internships and other experiential learning opportunities such as group projects, site visits and international study tours.
- **Faculty lectureship and named chair in adult education:** Help us establish a new lectureship and named chair in adult education in partnership with the Faculty of Education. This initiative will ensure that adult and lifelong learners can benefit from leading-edge andragogy and leverage existing and future data to advance adult education.



Fostering innovation

Enable individuals to keep their skills and knowledge up to date

The groundwork

The School of Continuing Studies serves as an incubator for emerging professions and economic sectors, specializing in transversal and multidisciplinary skill building.

Your impact

Your support will help the School prepare today's workforce for the challenges of the future through the creation of relevant academic programs that fill workforce gaps and help close the digital divide.





Impact opportunities

- **Sustainable Supply Network and Mobility Initiative (S2MI):** Support for [S2MI](#) will foster sustainable best practices in the movement of people, goods and services, and promote sustainable socio-economic development, including for Indigenous communities.
- **MSc (Applied) in Multilingual Digital Communication:** You can help strengthen [the only fully online advanced degree and applied research community](#) in Canada, connecting practical human language and communication needs with emerging technologies and AI worldwide.

Impact opportunities

- **Proposed SCS Institute of Responsible AI and workforce training:** Your gift can help SCS establish a new institute that would offer public education and short courses to accelerate the responsible integration of AI into the workplace.
- **Learning solutions for low bandwidth settings:** Your support will help close the digital divide by delivering learning services to communities without easy access to McGill's campus or high-speed internet, including remote Indigenous communities, rural areas and parts of Sub-Saharan Africa with underdeveloped infrastructure services.





Promoting well-being

Support student success and wellness

The groundwork

The School of Continuing Studies not only supports lifelong learning but is itself a learning organization, continuously adapting to demographic and technical changes. As such, SCS strives to apply a holistic approach to advising and mentoring for students and staff alike.

Your impact

Your support will ensure that learners of all ages receive 360-degree advising, mentoring and mental health assistance as needed, and that seniors have the tools they need to contribute to a productive and healthy civil society through co-generational learning.





Impact opportunities

McGill Community for Lifelong Learning (MCLL): You can support well-being by giving to the [MCLL](#), a volunteer-based peer learning centre for seniors and lifelong learners.

The MCLL counters isolation and overcomes mobility constraints with the help of **technology-enhanced classrooms and digital learning tools**. It also offers an intergenerational mentoring program that connects seniors with younger learners, especially newcomers and underserved community members.



Impact opportunities

Student Success and Enrolment Management advising services: Your support will provide learners with holistic academic and career-building supports, such as program advising, career guidance and professional networking, that are critical for successful learning and professional growth.

Local Wellness Advisor: You can support a Local Wellness Advisor who offers critical mental health services and other counselling support to learners.



5

Giving strategically

The Continuing Studies Opportunities Fund

You can maximize the impact of your donation by giving to the **Continuing Studies Opportunities Fund**. Support for this fund gives the School the flexibility to quickly and strategically respond to emerging opportunities such as:

- Scholarships and bursaries
- Seed funding for innovative programming and applied research
- Online and distance learning development
- Community partnerships development



The result

Partnering for impact



Sustainable and inclusive best practices for digital-ready, global communities. And a healthy civil society, aging with purpose.

Your gift to the School of Continuing Studies will help us build capacity in professional education, workforce development and lifelong learning, which are especially needed by underserved groups in areas like AI, digital health and finance, and 21st century governance and management skills.

You will be supporting the creation of a future-ready and resilient populace, with citizens of all ages and backgrounds who are empowered to learn wherever they are.



68
McGill

Départements des services de soutien
Support Services Departments

École d'éducation permanente
School of Continuing Studies

École des sciences infirmières Ingrid



With your philanthropic support, we can create:

Opportunities that open doors

Ensuring that no qualified student is denied a McGill education for financial reasons, while expanding the range of perspectives on campus.

Research that changes lives

Pushing the boundaries of knowledge and collaborating at the intersection of disciplines where solutions to global challenges will emerge.

Innovation that drives progress

Building a vibrant innovation ecosystem that brings creative ideas from the classroom or the lab to the marketplace and the community.

Education that shapes future-ready students

Training students to thrive as engaged citizens and leaders, while making a positive impact on the world around us.

McGill University is on land which has long served as a site of meeting and exchange amongst Indigenous peoples, including the Haudenosaunee and Anishinabeg nations.

We acknowledge and thank the diverse Indigenous peoples whose presence marks this territory on which peoples of the world now gather.

Make *your mark* today.



McGill

School of
Continuing Studies

giving.mcgill.ca/continuingstudies