



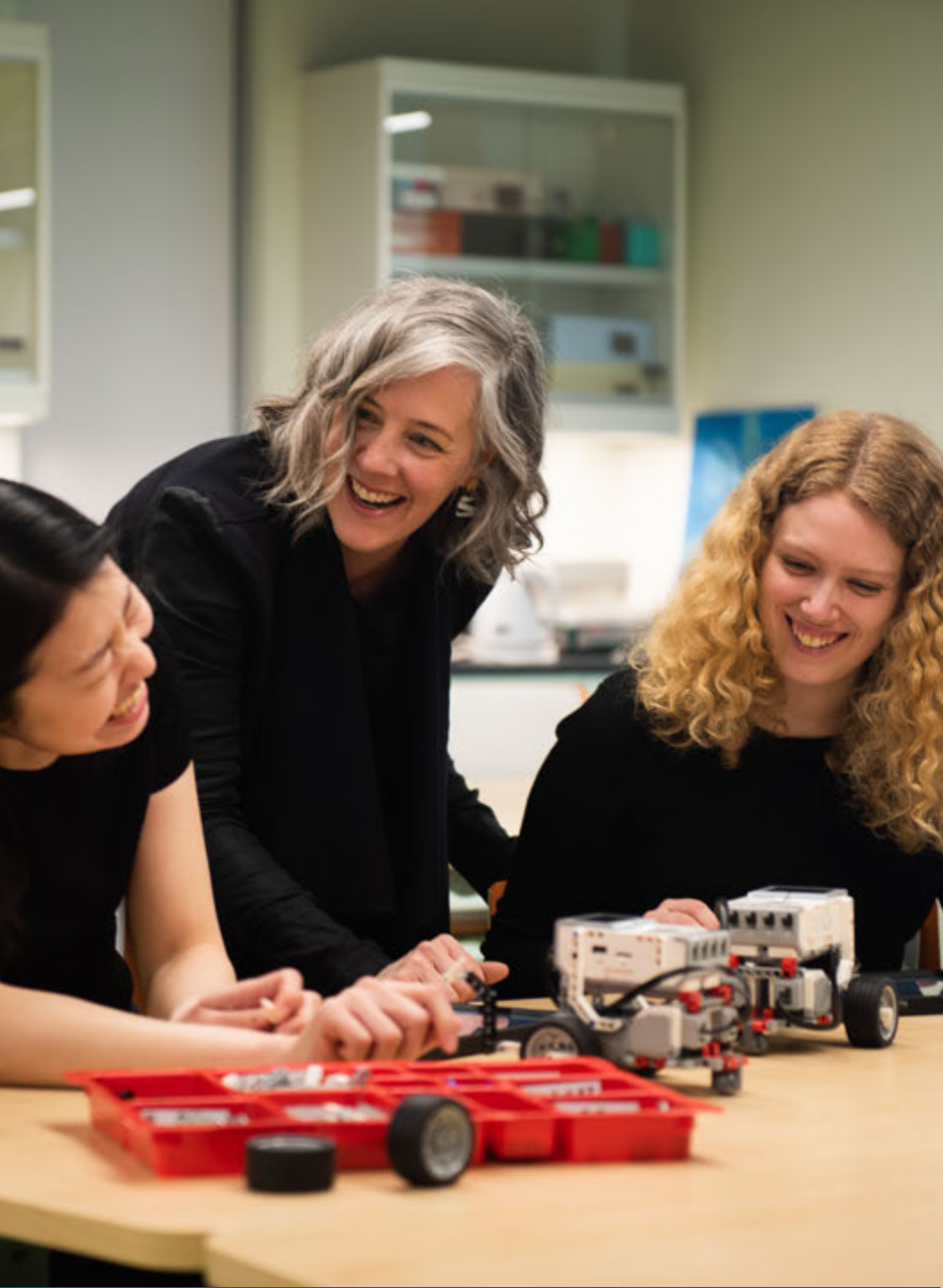
McGill

Faculty of
Education

Empowering
minds and
transforming
futures

Make *your* mark

Building individual capacity for
lifelong learning, growth and resilience
is essential to meeting the challenges
of our changing world.



High-quality education and lifelong learning are crucial to **breaking the cycle of poverty** and addressing structural inequality.

Education is core to the mission of truth and reconciliation. The gaps in educational opportunities for Indigenous peoples must be addressed.

Digital literacy and **critical thinking skills** are essential in an age of increasing polarization and cyberbullying.

Early childhood **education** is foundational to our academic and personal success and deserves rigorous study.

How will we address these challenges?

At the Faculty of Education,
we foster independent,
critical and creative thinking.

We do this through quality
education, transdisciplinary
research and community
engagement designed to
foster societal transformation.

The Faculty of Education aims to build and strengthen educational systems for **lifelong learning and growth**, enabling the development of skills, values and attitudes that contribute to **healthy and fulfilled lives, informed decision making, and civic engagement.**

Our academic vision

- To advance knowledge and applied research about human development across the lifespan
- To uphold high-calibre interactive learning opportunities through courses, lab work, and field placements
- To foster active lifelong knowledge acquisition through skill-enhancing continuing education opportunities for alumni, practicing professionals, and those seeking new careers
- To uphold the values of equity, diversity, inclusion, professional ethics and social responsibility as we collectively contribute to our scholastic communities



Make *your* mark

Empowering minds and transforming futures

Opportunities for philanthropic support

- 1 Education for wellness
 - 2 Advancing elite human performance
 - 3 Digital literacy that promotes pluralistic dialogue
 - 4 Partnering for Indigenous education
 - 5 Investing in young minds
 - 6 Cultivating a global community of learners and educators
-
- 7 Giving strategically: The Education Opportunities Fund



Education for wellness

Support the Education for Health and Well-being initiative

The groundwork

Led by the [Department of Educational and Counselling Psychology](#), the Faculty has a constellation of activities that support the mental health and well-being of students, teachers and parents.





Your impact

Together, we can accelerate the transition towards academic environments that prioritize mental health and well-being. This will facilitate the learning outcomes and mental health resilience so critical to future success.

Your gift will support:

- Research, development and dissemination of educational materials for the mental health of children, families, athletes and educators
- Community-facing projects like the [Psychoeducational and Counselling Clinic](#)



Advancing elite human performance

Support the Sylvan Adams Sports Science Institute

The groundwork

Thanks to philanthropic support, the [Sylvan Adams Sports Science Institute](#) (SASSI) was launched in 2022 as a world-leading facility that aims to advance sport science research and transfer the findings directly to athletes, coaches and support staff.

Your impact

Your gift to SASSI will:

- Strengthen our capacity to advance elite sport performance – from the muscle cell to the podium
- Reduce barriers for students and emerging researchers
- Provide our scholars with cutting-edge equipment
- Build local and international networks for collaboration, outreach and engagement





3

Digital literacy that promotes pluralistic dialogue

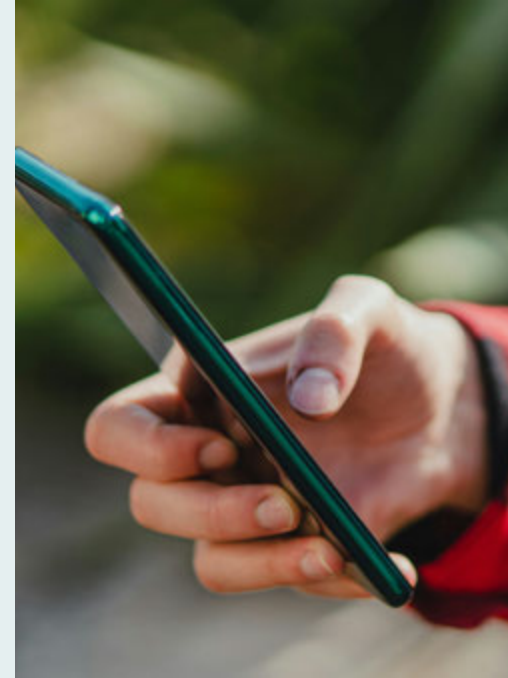
Support CYBER: Canadian Youth Building Empathy and Resilience

The groundwork

We are supporting marginalized and vulnerable Canadian youth to build critical digital literacy skills through **CYBER: Canadian Youth Building Empathy and Resilience**.

CYBER is a new multi-stakeholder, pan-Canadian and interdisciplinary project that addresses the growing social ills associated with discriminatory, prejudicial, xenophobic and hateful conduct on social media. It helps young people develop their digital literacy through co-creative multimedia arts projects that amplify their narratives of resilience.

CYBER builds on existing work by Faculty of Education researchers that considers interdependent social, cultural, health-based, technological and educational factors.





Your impact

Your support for CYBER will enable us to:

- Work with more than 2,000 young adults (18-35 years old) across Canada over a period of seven years
- Establish and run consultation groups across five Canadian cities in Quebec, Ontario and Alberta in community and scholastic contexts
- Build and maintain an interactive CYBER website to house the media created by youth, as well as a mobile application
- Create workshop materials and youth leadership programs
- Run an annual art installation and performance event in each of the five Canadian cities
- Perform rigorous formative and summative evaluations



Partnering for Indigenous education

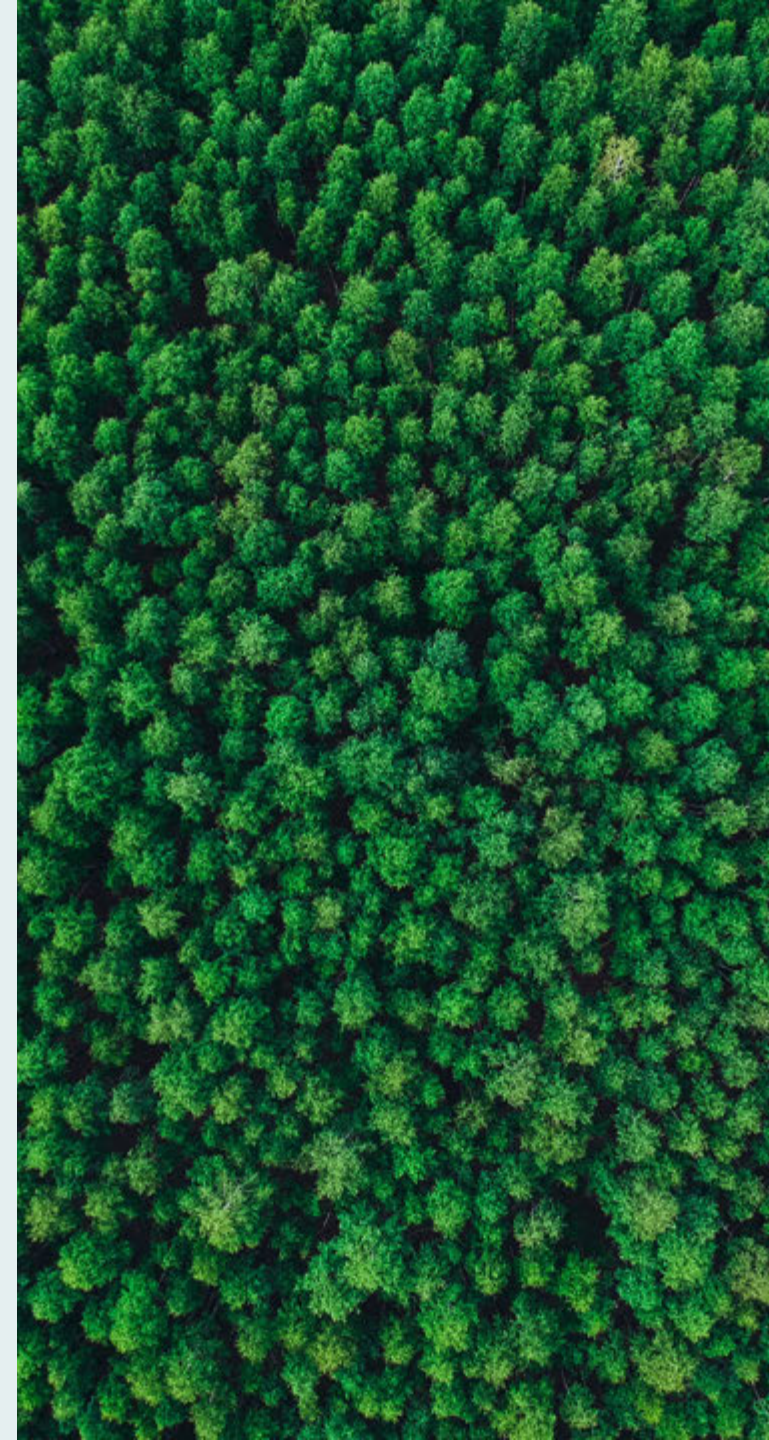
Support the Office of First Nations and Inuit Education

The groundwork

McGill is moving forward on the meaningful integration of Indigenous studies and Indigenous education as part of [our efforts towards truth and reconciliation](#).

Housed within the Department of Integrated Studies in Education, the [Office of First Nations and Inuit Education](#) (OFNIE) works in partnership with First Nations and Inuit education authorities throughout Quebec to deliver community-based teacher education programs and professional development.

Our transdisciplinary and intergenerational approach is grounded in established community relationships and founded on trust, respect, reciprocity, consent and accountability.



A close-up photograph of a wooden comb with a smooth, light-colored handle. The comb's teeth are made of wood and are slightly curved. The background is blurred, showing more of the comb and some indistinct shapes.

Your impact

Your gift will support the aspirations of Indigenous scholars and communities by strengthening our capacity to co-create and deliver culturally appropriate, land-based educational programs with our Indigenous partners, both on campus and in their communities.

Your support will go towards:

- Developing and maintaining partnerships with Indigenous communities and schoolboards
- Building Indigenous community-based training initiatives
- Providing social service support such as childcare and extra-curricular cultural events
- Establishing a Research Chair in Indigenous Studies for creating a sustainable vision for the future of OFNIE



Investing in young minds

Support the Daniel and Monica Gold Centre
for Early Childhood Development

The groundwork

Early childhood is a critical time for intervening in support of children with learning difficulties and neurodiversity.

Diagnosing neurodivergence is the first step to identifying holistic strategies for educators and families to support the specific needs of the student. Educators can then create learning environments that accommodate and support the student's capacity for success in learning.





Your impact

Your support can ensure that children with specific learning needs have the resources to thrive inside and outside the classroom.

Your gift can help:

- Improve access to learning assessments by expanding personnel resources for community-based programming that supports learners, teachers and families
- Expand the capacity of the [Psychoeducational and Counselling Clinic](#) and broaden service delivery and community-based interventions
- Recruit and retain new academics who specialize in literacy and early childhood
- Create and disseminate materials as part of the [Education for Mental Health Resilience](#) programs, which support teachers and families who in turn help students with neurodiversity and emotional regulation challenges
- Establish new academic undergraduate and graduate programs (including a graduate certificate) to support early childhood education



Cultivating a global community of learners and educators

Enhance access to teacher training and educational
opportunities for underserved communities

The groundwork

Education transforms lives, yet the 2024 United Nations' Sustainable Development Goals Report underlines that “many countries [continue to] face challenges such as inadequate education infrastructure, teacher shortages and insufficient teacher training.”

Our faculty members have long-established partnerships with peers across the world – including in the Global South – **to increase access to quality education for underserved communities.**

Together, we are enhancing the quality of teaching and learning that is so critical to nurturing and empowering well-rounded individuals.





Your impact

Your support can ensure that stakeholders across the world have access to better quality education by helping to:

- Create and disseminate Massive Open Online Courses (MOOCs) to support teachers in their professional development
- Create new undergraduate and graduate programs (including a graduate certificate) to add to our current bachelor's program in Education in Global Contexts
- Increase curricular program evaluation and monitoring, and develop context-specific and culturally appropriate frameworks for program evaluations



Giving strategically

The Education Opportunities Fund

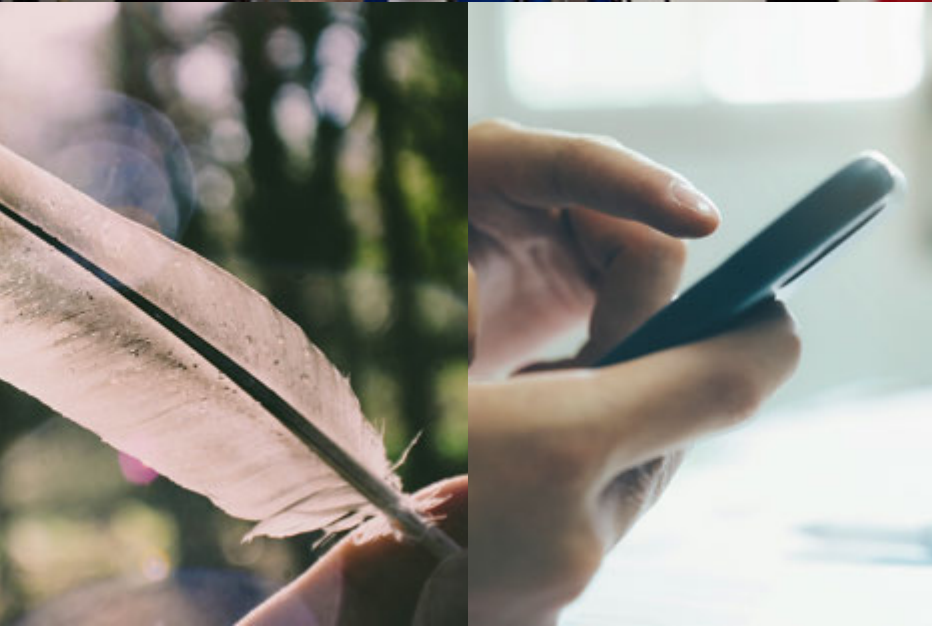


You can maximize the impact of your donation by giving through the [Education Opportunities Fund](#), which allows us to respond quickly and strategically to emerging opportunities such as:

- Scholarships
- Professorships and scholar awards, including those for underrepresented communities
- Experiential learning opportunities
- Community engagement projects
- Knowledge mobilization workshops with schoolboards
- Art-based pedagogical innovation development
- Cultural and performance events to showcase the rich diversity of initiatives across school and community settings

The result

Partnering for impact



Your gift to the Faculty of Education will strengthen **critical digital literacy, build mental health resilience, and advance human performance.**

You will enable the **development of skills, values and attitudes** that contribute to healthy and fulfilled lives, informed decision making and civic engagement.

You will support the aspirations of a new generation of **Indigenous scholars and communities**, across different ways of teaching, learning and knowing.

You will help us **revolutionize education** to unlock creative, innovative approaches to complex global challenges. This includes overcoming polarization, educating for sustainability, and building up leadership potential in communities through collaborative approaches.



With your philanthropic support, we can create:

Opportunities that open doors

Ensuring that no qualified student is denied a McGill education for financial reasons, while expanding the range of perspectives on campus.

Research that changes lives

Pushing the boundaries of knowledge and collaborating at the intersection of disciplines where solutions to global challenges will emerge.

Innovation that drives progress

Building a vibrant innovation ecosystem that brings creative ideas from the classroom or the lab to the marketplace and the community.

Education that shapes future-ready students

Training students to thrive as engaged citizens and leaders, while making a positive impact on the world around us.

McGill University is on land which has long served as a site of meeting and exchange amongst Indigenous peoples, including the Haudenosaunee and Anishinabeg nations.

We acknowledge and thank the diverse Indigenous peoples whose presence marks this territory on which peoples of the world now gather.

Make *your mark* today.



McGill

Faculty of
Education

giving.mcgill.ca/education