



McGill

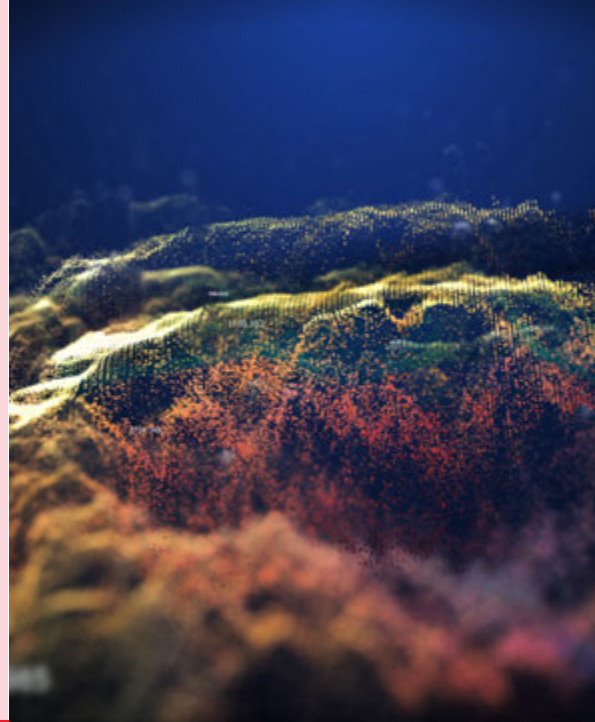
Faculty of
Engineering

Engineering
for our collective
humanity

Make *your* mark

Our world – and our
students – are facing many
intersecting challenges.

Humanity needs to learn to **live well with technology**, especially given the potential impact of developments in fields from artificial intelligence (AI) to bioengineering.



Sustainability is the global challenge of our time, requiring us to consider the environmental, social and economic aspects of everything we do.



In a rapidly evolving and increasingly complex world, our students need to be prepared for challenges we can't yet imagine.

We need to adapt the way we teach engineering and design professionals for this new world, helping them to **develop innovative and entrepreneurial mindsets and skills**.

How will we address these challenges?

- By preparing students to be future-ready and globally-minded
- By integrating sustainability into the core of our programs
- By expanding the boundaries of what design professionals and researchers can do

Our academic vision

- To provide our students with the best possible educational experience, equipping them with the skills they need to contribute to a more sustainable future
- To lead cutting-edge research into nascent areas that could contribute to the sustainability transition, enabling us to live in harmony with each other, with nature and with technology
- To embed principles of fairness, representation, belonging, sustainability and ethics into everything we do – ensuring all students approach their work through the lens of these values



Make *your* mark

Engineering for our collective humanity

Opportunities for philanthropic support

- 1 Creating a more sustainable world
 - 2 Expanding what design professionals can do
 - 3 Innovating in engineering education
 - 4 Empowering students
 - 5 Supporting innovation and entrepreneurship
 - 6 Bringing inclusion into the ethos of engineering
-
- 7 **Giving strategically: The Engineering Opportunities Fund**

Creating a more sustainable world

Help us put sustainability first

The groundwork

The Faculty of Engineering has a long history of excellence in sustainability. We are home to the flagship [Trottier Institute for Sustainability in Engineering and Design](#), one of the three founding Faculties of the [McGill Sustainability Systems Initiative](#) and the [Bieler School of Environment](#), and one of two Faculties home to the [Brace Water Centre](#).





Your impact

Your gift will help us continue to place sustainability at the core of all our programs, and advance sustainability research through the following initiatives:

- The expansion of the [McGill Centre for Innovation in Storage and Conversion of Energy \(McISCE\)](#)
- A new Chair in Public Policy in Engineering and Design
- Fellowships and seed grants in sustainability research
- Visiting scholars and experts in integrated sustainability



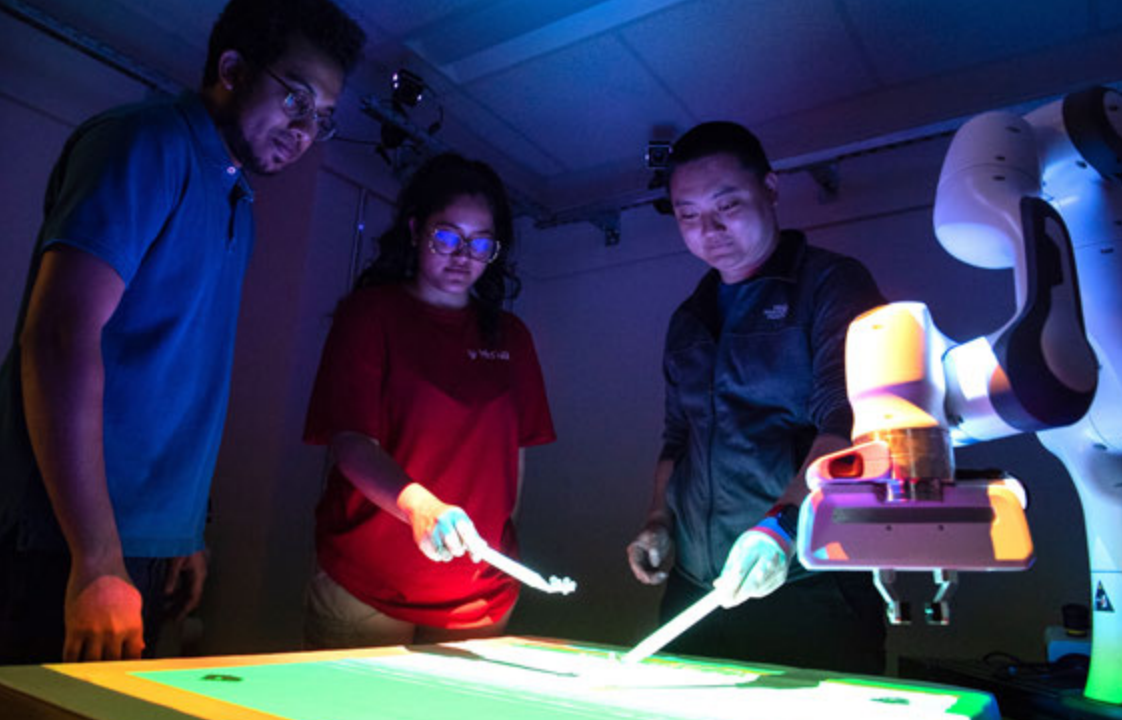
2

Expanding what design professionals can do

Support research and training in new and growing fields

The groundwork

Our rigorous academic programs provide a theoretical and practical education in engineering and design that incorporates other related disciplines – expanding our students’ education across both existing and emerging fields.



Your impact

Your gift will help us expand the boundaries of the design professional's role in society, equipping our students with the knowledge and mindset to navigate complex global challenges. With your support, we can establish and sustain initiatives that include:

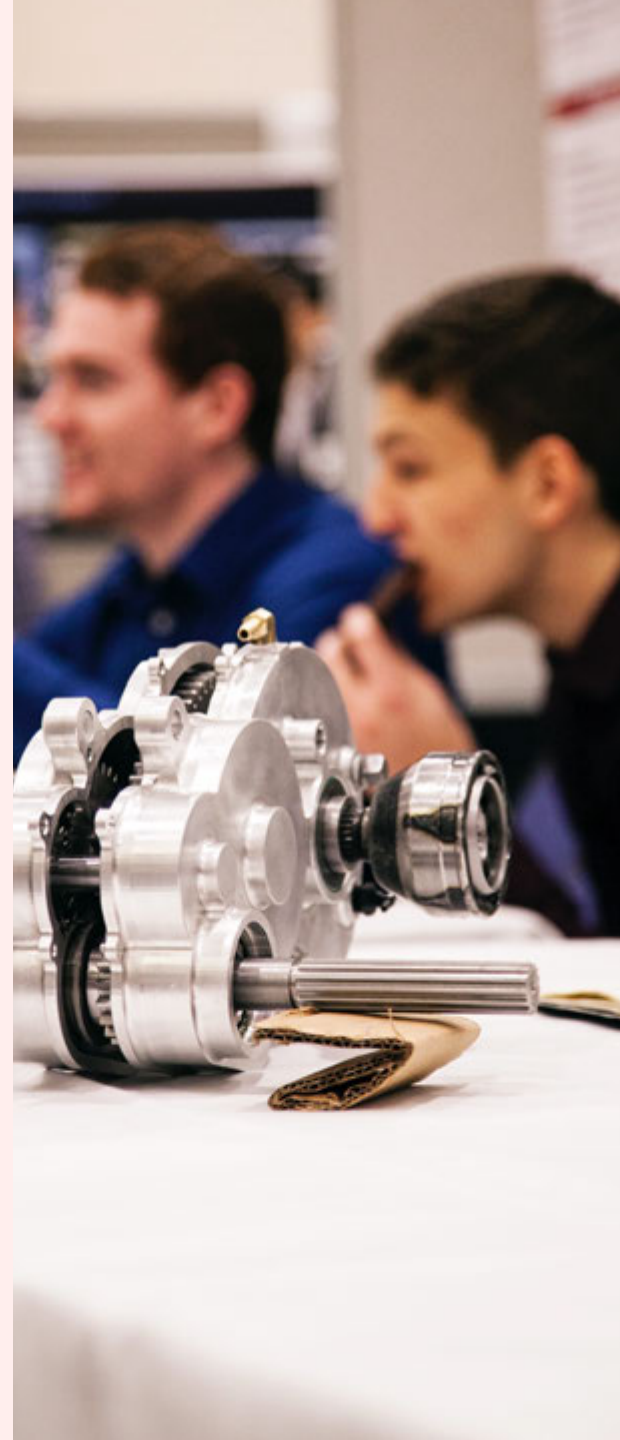
- A new Chair in Applied AI
- A Chair in Architectural History and Design
- A professorship and fellowships in AI
- Bioengineering facilities and laboratories
- Scholarships and fellowships in emerging fields

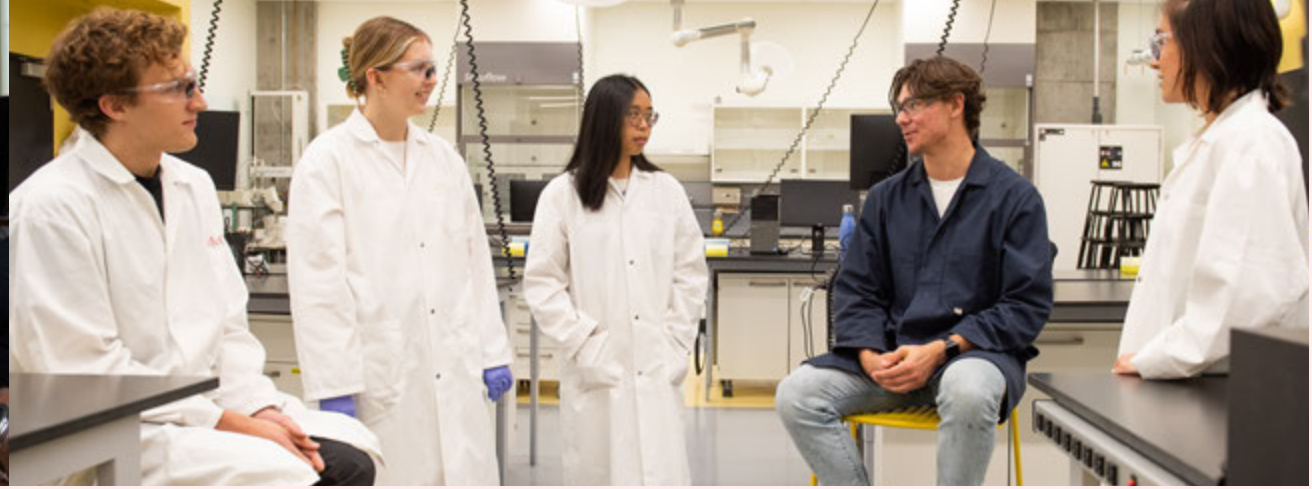
Innovating in engineering education

Help us launch the *Office for Collaborative Studies in Engineering*

The groundwork

We are constantly updating and modernizing our teaching – from integrating the latest technologies, to adopting the best pedagogical approaches based on research. Our [Enhancing Learning and Teaching in Engineering \(ELATE\)](#) initiative fosters an active faculty learning community that brings professors and instructors together to share their experiences and best practices.





Your impact

With your support, we will continue to innovate and promote excellence in engineering education with the **Office for Collaborative Studies in Engineering**. Support for this Office would allow us to:

- Establish a Chair in Engineering Education and Research
- Recruit an education technology specialist
- Support innovation and research in teaching

- Provide training and workshops, including:
 - Accreditable training for McGill professors and instructors, as well as for teachers from other universities, CEGEPs and colleges
 - Workshops for PhD students and postdoctoral researchers to develop their teaching skills
 - A proposed course-based master's program in Engineering Education for those who would like to build a teaching career in engineering



4

Empowering students

Help us strengthen experiential learning opportunities

The groundwork

One of the biggest challenges engineering students face upon graduation is turning years of theoretical training into real-world practice.

That's why we started [Empower](#), an extremely successful program that provides hands-on experiential learning opportunities to our students during their undergraduate studies, helping them develop the leadership, strategic and cross-cultural skills they will need to succeed in a global engineering industry.



Your impact

With your support, we can help our students learn to tackle complex, global problems through tailored goal-setting and experiential learning.

Your gift will help support:

- The creation of a Fabrication Laboratory (FabLAB)
- Student Design Teams such as the McGill Rocket Team, McGill Robotics, Chem E-Car and McGill Concrete Canoe
- Leadership workshops and a guest speaker series
- Student awards such as the Global Challenges Award, Student Initiative Fund and the Summer Undergraduate Research in Engineering program



5

Supporting innovation and entrepreneurship

Help us expand the *McGill Engine Centre*

The groundwork

Launched in 2013, the Faculty's [Engine Centre](#) encourages and supports technological innovators and entrepreneurs across campus, in collaboration with McGill's [Office of Innovation and Partnerships](#) and the [Dobson Centre for Entrepreneurship](#). Engine is also a Mitacs-approved incubator for their [Accelerate Entrepreneur](#) program.



Your impact

With your support, we can expand Engine to serve the entire McGill research community, from engineers and designers to medical researchers, scientists, and anyone with an idea to help advance society through technological innovation.

Your gift will help us fund:

- Innovation fellowships
- An innovation fund to support student projects and ideas
- Additional entrepreneurs-in-residence with expertise in important fields such as health innovation

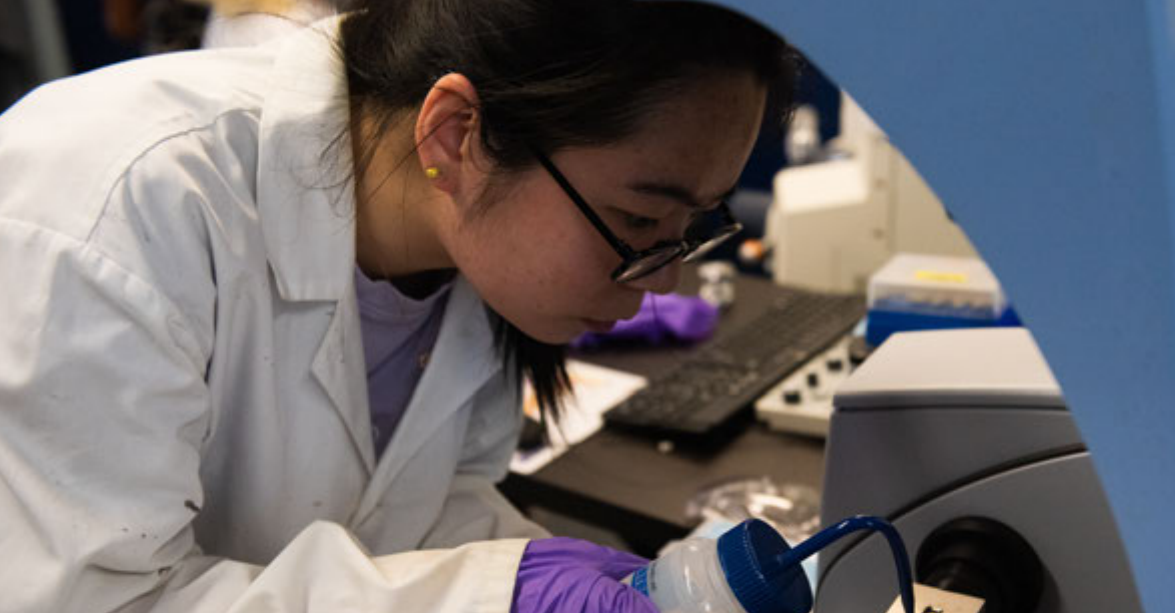
Bringing inclusion into the ethos of engineering

Support the *Engineering Inclusivity, Diversity and Equity Advancement (E-IDEA)* office

The groundwork

The Faculty of Engineering is committed to creating a more inclusive and accessible McGill community. The [E-IDEA office](#) leads these efforts and addresses all stages of the student and staff lifecycle, from outreach in high schools and university recruitment, to student support and retention, workforce diversity and professional well-being.





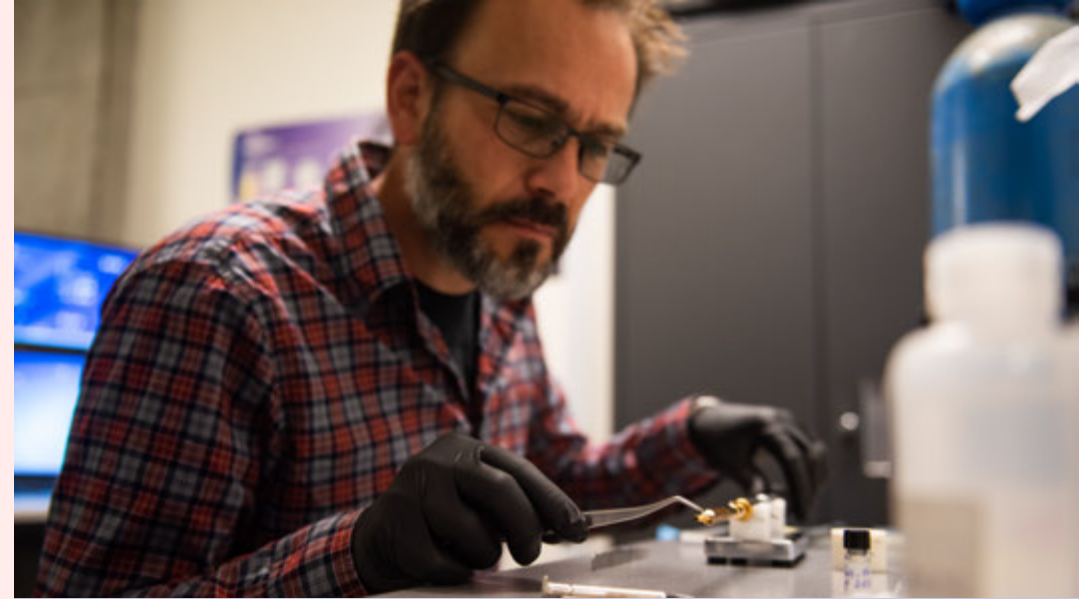
Your impact

With your support, we can continue building capacity for engineering and design professionals to navigate real-world problems through an equity-based lens. Your gift will help us sustain:

- Our [Community Engagement Program](#)
- A specialist in accessibility and inclusion in higher education
- Support for student internships
- Scholarships, fellowships and research awards for underserved groups, including Indigenous and female students

The Engineering Opportunities Fund

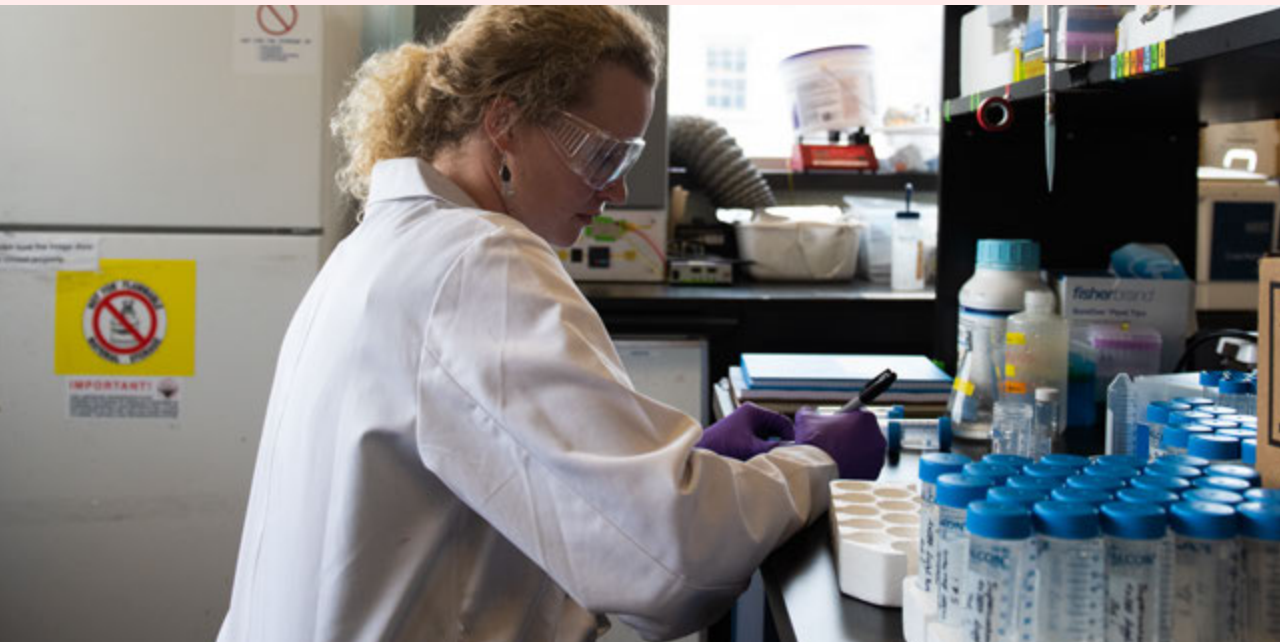
You can maximize the impact of your donation by giving through the **Engineering Opportunities Fund**. Directing support to this fund allows us to respond to emerging opportunities quickly and strategically, including scholarships and bursaries, professorships and scholar awards.



The result:
Partnering for impact

Your gift to the Faculty of Engineering will help us:

- Prepare students to be **future-ready and globally-minded leaders**, equipped with the knowledge, skills and competencies to address complex challenges that impact their communities
- **Expand the boundaries** of what design professionals can do
- Create a more sustainable world, for **the future we deserve**





With your philanthropic support, we can create:

Opportunities that open doors

Ensuring that no qualified student is denied a McGill education for financial reasons, while expanding the range of perspectives on campus.

Research that changes lives

Pushing the boundaries of knowledge and collaborating at the intersection of disciplines where solutions to global challenges will emerge.

Innovation that drives progress

Building a vibrant innovation ecosystem that brings creative ideas from the classroom or the lab to the marketplace and the community.

Education that shapes future-ready students

Training students to thrive as engaged citizens and leaders, while making a positive impact on the world around us.

McGill University is on land which has long served as a site of meeting and exchange amongst Indigenous peoples, including the Haudenosaunee and Anishinabeg nations. We acknowledge and thank the diverse Indigenous peoples whose presence marks this territory on which peoples of the world now gather.

Make *your mark* today.



McGill

Faculty of
Engineering

giving.mcgill.ca/engineering